

# ARCHITECTURAL HERITAGE

— HANDMADE GARDEN COLLECTIONS —



Welcome to our 2023 Handmade Garden Collections Catalogue.

As I write on the shortest day of the year, I look out upon apple trees that need pruning, a veg patch that needs attention and a long list of to-dos... but somehow the promise, when time allows, of a day in the garden lifts both body and soul.

As we dream of the lighter, warmer days to come, our attention is held by the structure of the garden, be it formal or wild; these bare bones give sight to areas where planters, water features and ornament will sit, and draw focus as desired before the mad busyness of spring and the abundance of growth that it brings.

Our garden catalogue, which this year I have sought to slim down from the ever-enlarging tome, features an example of every design with further images and information now on the website when needed. You will, however, see new products alongside the classics as part of the never-ending process of researching, developing, and refining the collections to, with hope, be a resource of ideas for the outside areas you have already developed, or are planning to change in the future.

As always, I wish to thank you for your kind interest in what we do, and I look forward to being of assistance as your garden project requires.

All best regards

Alex Puddy



# ARCHITECTURAL HERITAGE

— HANDMADE GARDEN COLLECTIONS —



The Age-Patinated Artificial Stone  
Garden Fountain & Ornament Collection



The Verdigris Copper  
Garden Collection



The Forged Iron Garden  
Dining & Furniture Collection



The Carved Natural Stone  
Garden Ornament Collection



The Lead Garden Ornament  
& Planter Collection



The Curated  
Garden Collection









**THE FORGED  
IRON GARDEN  
DINING &  
FURNITURE  
COLLECTION**





### **The Circular Bistro Table with Two Low Ladderback Carver Garden Chairs**

Inspired by the 19th century French originals, this distinctive garden dining and furniture collection is forged with a long life outdoors in mind, with each handcrafted piece zinc-galvanised to protect against rust. The furniture is then primed and painted in our standard white or, alternatively, to a paint colour of your choice.

Chair height 83 cm [2' 8¾"]

Chair width 64 cm [2' 1¼"]

Chair depth 70 cm [2' 3½"]

Table height 74 cm [2' 5"]

Table diameter 62 cm [2' ½"]





### **The Circular Bistro Table with Two Ladderback Garden Chairs**

Chair height 81 cm [2' 8"]

Chair width 45 cm [1' 5¾"]

Chair depth 50 cm [1' 7¾"]

Table height 74 cm [2' 5"]

Table diameter 62 cm [2' ½"]



### **The Circular Bistro Table with Two Sprung Carver Garden Chairs**

Chair height 93 cm [3' ½"]

Chair width 50 cm [1' 7¾"]

Chair depth 58 cm [1' 10¾"]

Table height 74 cm [2' 5"]

Table diameter 62 cm [2' ½"]



### **The Circular Bistro Table with Two Sprung Garden Chairs**

Chair height 93 cm [3' ½"]

Chair width 47 cm [1' 6½"]

Chair depth 46 cm [1' 6"]

Table height 74 cm [2' 5"]

Table diameter 62 cm [2' ½"]



**The Medium Circular Garden Dining Table with  
Four Ladderback Carver Garden Chairs**

Inspired by the 19th century French originals, this distinctive garden dining and furniture collection is forged with a long life outdoors in mind, with each handcrafted piece zinc-galvanised to protect against rust. The furniture is then primed and painted in our standard white or, alternatively, to a paint colour of your choice.

Chair height 88cm [2' 10½"]

Chair width 64cm [2' 1¼"]

Chair depth 70cm [2' 3¼"]

Table height 74cm [2' 5"]

Table diameter 110cm [3' 7¼"]





### **The Medium Circular Garden Dining Table with Four Ladderback Garden Chairs**

Inspired by the 19th century French originals, this distinctive garden dining and furniture collection is forged with a long life outdoors in mind, with each handcrafted piece zinc-galvanised to protect against rust. The furniture is then primed and painted in our standard white or, alternatively, to a paint colour of your choice.

Chair height 81 cm [2' 8"]

Chair width 45 cm [1' 5¾"]

Chair depth 50 cm [1' 7¾"]

Table height 74 cm [2' 5"]

Table diameter 110 cm [3' 7¼"]









**The Medium Circular Garden Dining Table with  
Semi-Circular Ladderback Garden Seat (High) and  
Three Ladderback Garden Chairs**

Inspired by the 19th century French originals, this distinctive garden dining and furniture collection is forged with a long life outdoors in mind, with each handcrafted piece zinc-galvanised to protect against rust. The furniture is then primed and painted in our standard white or, alternatively, to a paint colour of your choice.

Seat height 92 cm [3']

Seat width 208 cm [6' 10"]

Seat depth 90 cm [2' 11½"]

Chair height 81 cm [2' 8"]

Chair width 45 cm [1' 5¾"]

Chair depth 50 cm [1' 7¾"]

Table height 74 cm [2' 5"]

Table diameter 110 cm [3' 7¼"]



**The Large Circular Garden Dining Table with  
Four Ladderback Carver Garden Chairs**

Inspired by the 19th century French originals, this distinctive garden dining and furniture collection is forged with a long life outdoors in mind, with each handcrafted piece zinc-galvanised to protect against rust. The furniture is then primed and painted in our standard white or, alternatively, to a paint colour of your choice.

Chair height 88cm [2' 10½"]

Chair width 64cm [2' 1¼"]

Chair depth 70cm [2' 3¼"]

Table height 74cm [2' 5"]

Table diameter 126cm [4' 1½"]





### **The Large Circular Garden Dining Table with Six Ladderback Garden Chairs**

Inspired by the 19th century French originals, this distinctive garden dining and furniture collection is forged with a long life outdoors in mind, with each handcrafted piece zinc-galvanised to protect against rust. The furniture is then primed and painted in our standard white or, alternatively, to a paint colour of your choice.

Chair height 81 cm [2' 8"]

Chair width 45 cm [1' 5¾"]

Chair depth 50 cm [1' 7¾"]

Table height 74 cm [2' 5"]

Table diameter 126 cm [4' 1½"]



### **The Square Garden Dining Table with Four Ladderback Garden Chairs**

Inspired by the 19th century French originals, this distinctive garden dining and furniture collection is forged with a long life outdoors in mind, with each handcrafted piece zinc-galvanised to protect against rust. The furniture is then primed and painted in our standard white or, alternatively, to a paint colour of your choice.

Chair height 81 cm [2' 8"]  
Chair width 45 cm [1' 5¾"]  
Chair depth 50 cm [1' 7¾"]  
Table height 74 cm [2' 5"]  
Table width 86 cm [2' 10"]  
Table depth 86 cm [2' 10"]





### **The Square Garden Dining Table with Four Ladderback Carver Garden Chairs**

Chair height 88 cm [2' 10½"]

Chair width 64 cm [2' 1¼"]

Chair depth 70 cm [2' 3¼"]

Table height 74 cm [2' 5"]

Table width 86 cm [2' 10"]

Table depth 86 cm [2' 10"]



### **The Square Garden Dining Table with Four Sprung Garden Chairs**

Chair height 93 cm [3' ½"]

Chair width 47 cm [1' 6½"]

Chair depth 46 cm [1' 6"]

Table height 74 cm [2' 5"]

Table width 86 cm [2' 10"]

Table depth 86 cm [2' 10"]



### **The Square Garden Dining Table with Four Sprung Carver Garden Chairs**

Chair height 93 cm [3' ½"]

Chair width 50 cm [1' 7¾"]

Chair depth 58 cm [1' 10¾"]

Table height 74 cm [2' 5"]

Table width 86 cm [2' 10"]

Table depth 86 cm [2' 10"]









**The Medium Rectangular Garden Dining Table with Four Ladderback Garden Chairs and Two Ladderback Carver Garden Chairs**

Inspired by the 19th century French originals, this distinctive garden dining and furniture collection is forged with a long life outdoors in mind, with each handcrafted piece zinc-galvanised to protect against rust. The furniture is then primed and painted in our standard white or, alternatively, to a paint colour of your choice.

Chair height 81 cm [2' 8"]

Chair width 45 cm [1' 5¾"]

Chair depth 50 cm [1' 7¾"]

Carver height 88 cm [2' 10½"]

Carver width 64 cm [2' 1¼"]

Carver depth 70 cm [2' 3¼"]

Table height 74 cm [2' 5"]

Table length 161 cm [5' 3½"]

Table width 86 cm [2' 10"]



**The Large Rectangular Garden Dining Table  
with Eight Ladderback Garden Chairs and  
Two Ladderback Carver Garden Chairs**

Inspired by the 19th century French originals, this distinctive garden dining and furniture collection is forged with a long life outdoors in mind, with each handcrafted piece zinc-galvanised to protect against rust. The furniture is then primed and painted in our standard white or, alternatively, to a paint colour of your choice.

Chair height 81 cm [2' 8"]  
 Chair width 45 cm [1' 5¾"]  
 Chair depth 50 cm [1' 7¾"]  
 Carver height 88 cm [2' 10½"]  
 Carver width 64 cm [2' 1¼"]  
 Carver depth 70 cm [2' 3¼"]  
 Table height 74 cm [2' 5"]  
 Table length 252 cm [8' 3¼"]  
 Table width 86 cm [2' 10"]





**The Very Large Rectangular Garden Dining Table  
with Ten Ladderback Garden Chairs and  
Two Ladderback Carver Garden Chairs**

Inspired by the 19th century French originals, this distinctive garden dining and furniture collection is forged with a long life outdoors in mind, with each handcrafted piece zinc-galvanised to protect against rust. The furniture is then primed and painted in our standard white or, alternatively, to a paint colour of your choice.

Chair height 81 cm [2' 8"]

Chair width 45 cm [1' 5¾"]

Chair depth 50 cm [1' 7¾"]

Carver height 88 cm [2' 10½"]

Carver width 64 cm [2' 1¼"]

Carver depth 70 cm [2' 3¼"]

Table height 74 cm [2' 5"]

Table length 298 cm [9' 9¾"]

Table width 86 cm [2' 10"]



### **The Circular Garden Coffee Table with Two Low Ladderback Carver Garden Chairs**

Inspired by the 19th century French originals, this distinctive garden dining and furniture collection is forged with a long life outdoors in mind, with each handcrafted piece zinc-galvanised to protect against rust. The furniture is then primed and painted in our standard white or, alternatively, to a paint colour of your choice.

Chair height 83 cm [2' 8¾"]

Chair width 64 cm [2' 1¼"]

Chair depth 70 cm [2' 3½"]

Table height 47 cm [1' 6½"]

Table diameter 62 cm [2' ½"]





### **The Circular Garden Coffee Table with Two Ladderback Garden Chairs**

Chair height 81 cm [2' 8"]

Chair width 45 cm [1' 5¾"]

Chair depth 50 cm [1' 7¾"]

Table height 47 cm [1' 6½"]

Table diameter 62 cm [2' ½"]



### **The Circular Garden Coffee Table with Two Sprung Carver Garden Chairs**

Chair height 93 cm [3' ½"]

Chair width 50 cm [1' 7¾"]

Chair depth 58 cm [1' 10¾"]

Table height 47 cm [1' 6½"]

Table diameter 62 cm [2' ½"]



### **The Circular Garden Coffee Table with Two Sprung Garden Chairs**

Chair height 93 cm [3' ½"]

Chair width 47 cm [1' 6½"]

Chair depth 46 cm [1' 6"]

Table height 47 cm [1' 6½"]

Table diameter 62 cm [2' ½"]



**The Rectangular Garden Coffee Table with Two Low Ladderback Carver Garden Chairs and a Small Straight Ladderback Garden Seat**

Inspired by the 19th century French originals, this distinctive garden dining and furniture collection is forged with a long life outdoors in mind, with each handcrafted piece zinc-galvanised to protect against rust. The furniture is then primed and painted in our standard white or, alternatively, to a paint colour of your choice.

Seat height 83 cm [2' 8¾"]  
 Seat width 121 cm [3' 11½"]  
 Seat depth 60 cm [1' 11½"]

Carver height 83 cm [2' 8¾"]  
 Carver width 64 cm [2' 1¼"]  
 Carver depth 70 cm [2' 3½"]

Table height 47 cm [1' 6½"]  
 Table length 122 cm [4']  
 Table width 70 cm [2' 3½"]





**The Rectangular Garden Coffee Table with Two Low Ladderback Carver Garden Chairs and a Medium Straight Ladderback Garden Seat**

Inspired by the 19th century French originals, this distinctive garden dining and furniture collection is forged with a long life outdoors in mind, with each handcrafted piece zinc-galvanised to protect against rust. The furniture is then primed and painted in our standard white or, alternatively, to a paint colour of your choice.

Seat height 83 cm [2' 8¾"]  
Seat width 148 cm [4' 10¼"]  
Seat depth 60 cm [1' 11½"]

Carver height 83 cm [2' 8¾"]  
Carver width 64 cm [2' 1¼"]  
Carver depth 70 cm [2' 3½"]

Table height 47 cm [1' 6½"]  
Table length 122 cm [4']  
Table width 70 cm [2' 3½"]





### **The Small Straight Ladderback Garden Seat**

Inspired by the 19th century French originals, this distinctive garden dining and furniture collection is forged with a long life outdoors in mind, with each handcrafted piece zinc-galvanised to protect against rust. The furniture is then primed and painted in our standard white or, alternatively, to a paint colour of your choice.

Height 83 cm [2' 8¾"]

Width 121 cm [3' 11½"]

Depth 60 cm [1' 11½"]





### **The Medium Straight Ladderback Garden Seat**

Inspired by the 19th century French originals, this distinctive garden dining and furniture collection is forged with a long life outdoors in mind, with each handcrafted piece zinc-galvanised to protect against rust. The furniture is then primed and painted in our standard white or, alternatively, to a paint colour of your choice.

Height 83 cm [2' 8¾"]  
Width 148 cm [4' 10¼"]  
Depth 60 cm [1' 11½"]



Garden Design by Bestall & Co Landscape Design

### **The Large Straight Ladderback Garden Seat**

Inspired by the 19th century French originals, this distinctive garden dining and furniture collection is forged with a long life outdoors in mind, with each handcrafted piece zinc-galvanised to protect against rust. The furniture is then primed and painted in our standard white or, alternatively, to a paint colour of your choice.

Height 83 cm [2' 8¼"]

Width 192 cm [6' 3½"]

Depth 60 cm [1' 11½"]





### **The Semi-Circular Ladderback Garden Seat**

Inspired by the 19th century French originals, this distinctive garden dining and furniture collection is forged with a long life outdoors in mind, with each handcrafted piece zinc-galvanised to protect against rust. The furniture is then primed and painted in our standard white or, alternatively, to a paint colour of your choice.

### **Standard**

Height 85 cm [2' 9½"]  
Width 208 cm [6' 10"]  
Depth 90 cm [2' 11½"]

### **Dining Height**

Height 92 cm [3']  
Width 208 cm [6' 10"]  
Depth 90 cm [2' 11½"]



### **The Semi-Circular Ladderback Garden Tree Seat with Arms**

Inspired by the 19th century French originals, this distinctive garden dining and furniture collection is forged with a long life outdoors in mind, with each handcrafted piece zinc-galvanised to protect against rust. The furniture is then primed and painted in our standard white or, alternatively, to a paint colour of your choice.

Height 88 cm [2' 10½"]

Width 190 cm [6' 2¾"]

Depth 90 cm [2' 11½"]





### **The Circular Ladderback Garden Tree Seat**

Inspired by the 19th century French originals, this distinctive garden dining and furniture collection is forged with a long life outdoors in mind, with each handcrafted piece zinc-galvanised to protect against rust. The furniture is then primed and painted in our standard white or, alternatively, to a paint colour of your choice.

Height 88 cm [2' 10½"]

Diameter 190 cm [6' 2¾"]









### **The Sprung Garden Chair**

Height 93 cm [3' 1/2"]

Width 47 cm [1' 6 1/2"]

Depth 46 cm [1' 6"]



### **The Sprung Carver Garden Chair**

Height 93 cm [3' 1/2"]

Width 50 cm [1' 7 3/4"]

Depth 58 cm [1' 10 3/4"]

Inspired by the 19th century French originals, this distinctive garden dining and furniture collection is forged with a long life outdoors in mind, with each handcrafted piece zinc-galvanised to protect against rust. The furniture is then primed and painted in our standard white or, alternatively, to a paint colour of your choice.



**The Ladderback  
Garden Chair**

Height 81 cm [2' 8"]  
Width 45 cm [1' 5¾"]  
Depth 50 cm [1' 7¾"]



**The Ladderback Carver  
Garden Chair – High**

Height 88 cm [2' 10½"]  
Width 64 cm [2' 1¼"]  
Depth 70 cm [2' 3¼"]



**The Ladderback Carver  
Garden Chair – Low**

Height 83 cm [2' 8¾"]  
Width 64 cm [2' 1¼"]  
Depth 70 cm [2' 3½"]





### **The Circular Bistro Table**

Height 74 cm [2' 5"]

Diameter 62 cm [2' ½"]



### **The Medium Circular Garden Dining Table**

Height 74 cm [2' 5"]

Diameter 110 cm [3' 7¼"]



### **The Large Circular Garden Dining Table**

Height 74 cm [2' 5"]

Diameter 126 cm [4' 1½"]



### **The Square Garden Dining Table**

Height 74 cm [2' 5"]

Length 86 cm [2' 10"]

Width 86 cm [2' 10"]

Seats 4



### **The Medium Rectangular Garden Dining Table**

Height 74 cm [2' 5"]

Length 161 cm [5' 3½"]

Width 86 cm [2' 10"]

Seats 6





### **The Large Rectangular Garden Dining Table**

Height 74 cm [2' 5"]

Length 252 cm [8' 3¼"]

Width 86 cm [2' 10"]

Seats 10



### **The Very Large Rectangular Garden Dining Table**

Height 74 cm [2' 5"]

Length 298 cm [9' 9¼"]

Width 86 cm [2' 10"]

Seats 12



### **The Circular Garden Coffee Table**

Height 47 cm [1' 6½"]

Diameter 62 cm [2' ½"]



### **The Rectangular Garden Coffee Table**

Height 47 cm [1' 6½"]

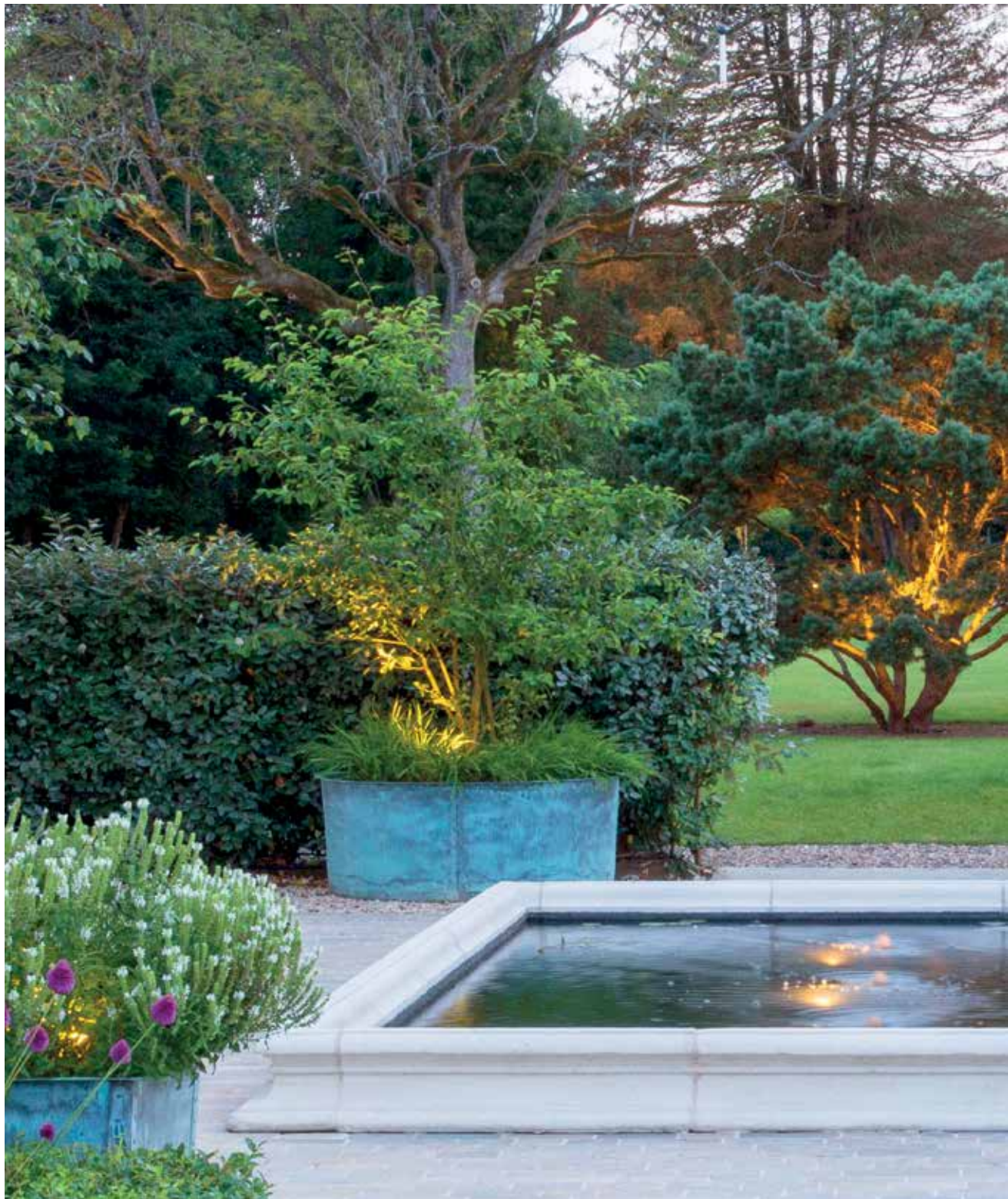
Length 122 cm [4']

Width 70 cm [2' 3½"]













**THE VERDIGRIS  
COPPER GARDEN  
COLLECTION**

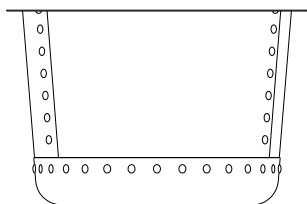






## The Circular Copper Planters

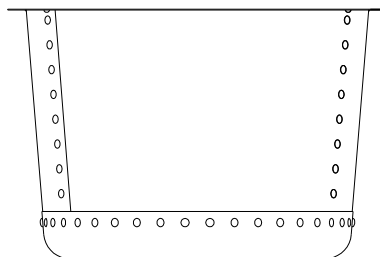
Hand crafted from heavy gauge brass, riveted together and then verdigris patinated to imitate the Victorian antique originals.



### Small

Height 35 cm [1' 1 $\frac{3}{4}$ "

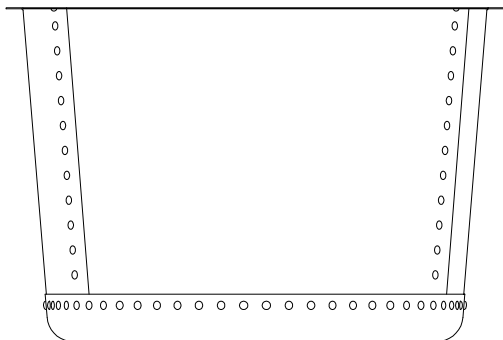
Diameter 54 cm [1' 9 $\frac{1}{4}$ "



### Medium

Height 45 cm [1' 5 $\frac{3}{4}$ "

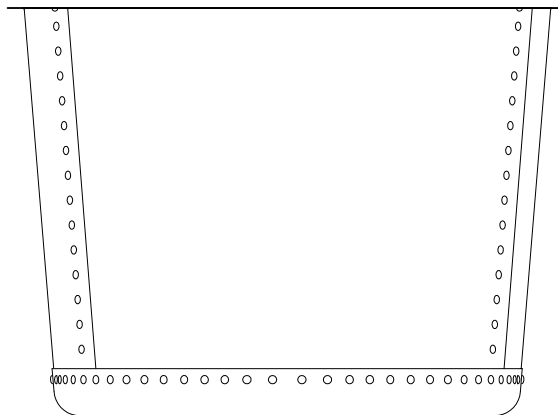
Diameter 68.5 cm [2' 3"



### Large

Height 60 cm [1' 11 $\frac{1}{2}$ "

Diameter 89.4 cm [2' 11 $\frac{1}{4}$ "



### Very Large

Height 73.5 cm [2' 5"

Diameter 100.8 cm [3' 3 $\frac{3}{4}$ "

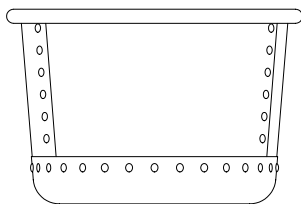




## The Circular Copper Planters Rolled Edge

Hand crafted from heavy gauge brass with a rolled-edge top, riveted together and verdigris patinated.

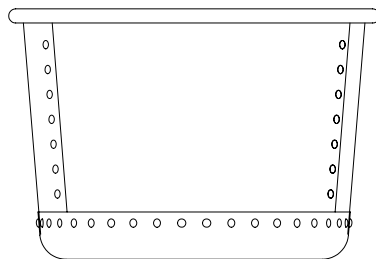
Image shows size: Large



### Small

Height 35 cm [1' 1 $\frac{3}{4}$ " ]

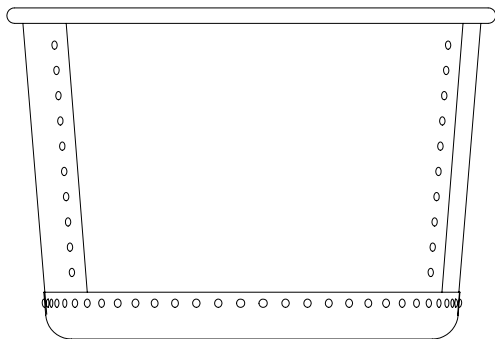
Width 53.2 cm [1' 9" ]



### Medium

Height 45 cm [1' 5 $\frac{3}{4}$ " ]

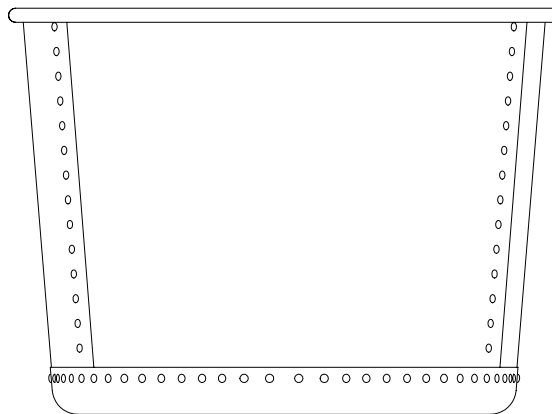
Width 66.7 cm [2' 2 $\frac{1}{4}$ " ]



### Large

Height 60 cm [1' 11 $\frac{1}{2}$ " ]

Width 88.6 cm [2' 11" ]



### Very Large

Height 73.5 cm [2' 5" ]

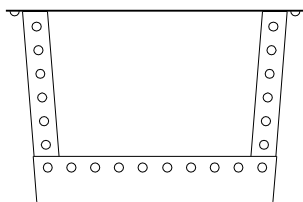
Width 99.7 cm [3' 3 $\frac{1}{4}$ " ]





## The Square Copper Planters

Hand crafted from heavy gauge brass, riveted together and then verdigris patinated to echo the Victorian antique originals.

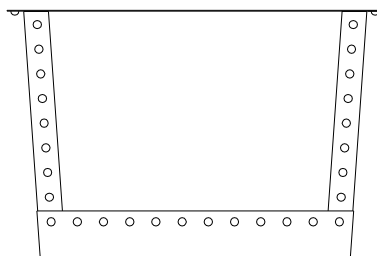


### Small

Height 35 cm [1' 1 $\frac{3}{4}$ "

Width 54 cm [1' 9 $\frac{1}{4}$ "

Depth 54 cm [1' 9 $\frac{1}{4}$ "

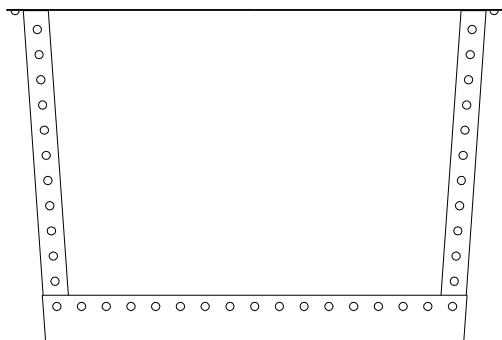


### Medium

Height 45 cm [1' 5 $\frac{3}{4}$ "

Width 68.5 cm [2' 3"

Depth 68.5 cm [2' 3"

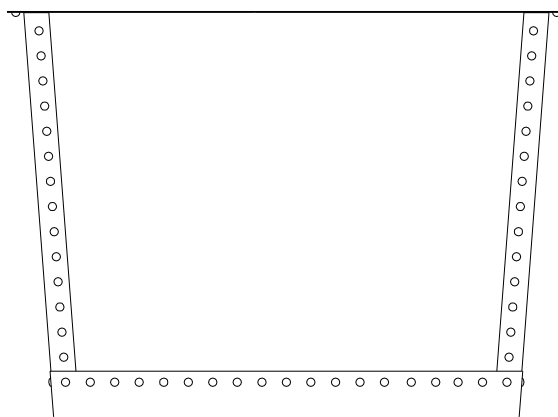


### Large

Height 60 cm [1' 11 $\frac{1}{2}$ "

Width 89.4 cm [2' 11 $\frac{1}{4}$ "

Depth 89.4 cm [2' 11 $\frac{1}{4}$ "



### Very Large

Height 73.5 cm [2' 5"

Width 100.8 cm [3' 3 $\frac{1}{2}$ "

Depth 100.8 cm [3' 3 $\frac{1}{2}$ "

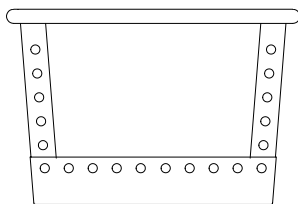




## The Square Copper Planters Rolled Edge

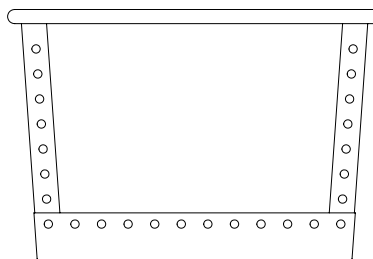
Hand crafted from heavy gauge brass with a rolled-edge top, riveted together and verdigris patinated.

Image shows size: Medium



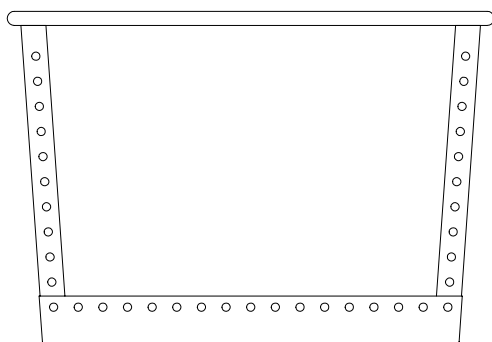
### Small

Height 35 cm [1' 1 $\frac{3}{4}$ "]  
Width 52.6 cm [1' 8 $\frac{3}{4}$ "]  
Depth 52.6 cm [1' 8 $\frac{3}{4}$ "]



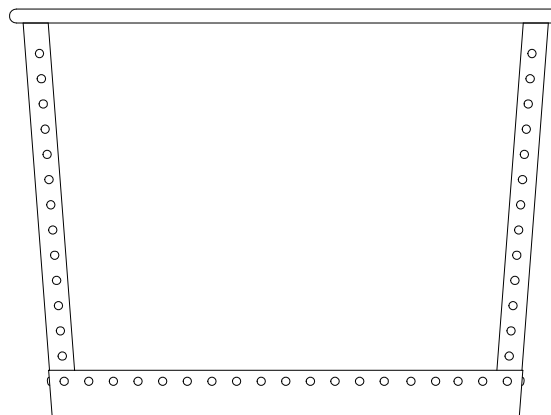
### Medium

Height 45 cm [1' 5 $\frac{3}{4}$ "]  
Width 67.1 cm [2' 2 $\frac{1}{2}$ "]  
Depth 67.1 cm [2' 2 $\frac{1}{2}$ "]



### Large

Height 60 cm [1' 11 $\frac{1}{2}$ "]  
Width 88.1 cm [2' 10 $\frac{3}{4}$ "]  
Depth 88.1 cm [2' 10 $\frac{3}{4}$ "]



### Very Large

Height 73.5 cm [2' 5"]  
Width 99.4 cm [3' 3 $\frac{1}{4}$ "]  
Depth 99.4 cm [3' 3 $\frac{1}{4}$ "]

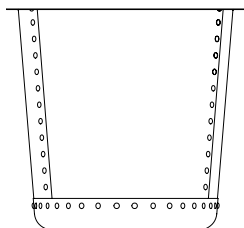




## The Circular Terrace Copper Planters

Hand crafted from heavy gauge brass with flat top or rolled-edge option, riveted together and verdigris patinated.

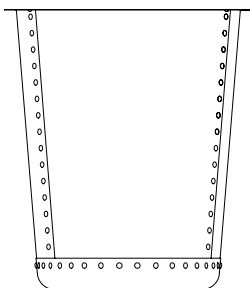
Image shows size: Medium



### Small

Height 60 cm [1' 11½"]

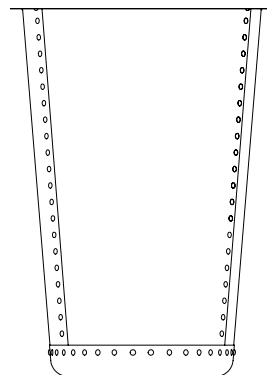
Diameter 64.7 cm [2' 1½"]



### Medium

Height 76.2 cm [2' 6"]

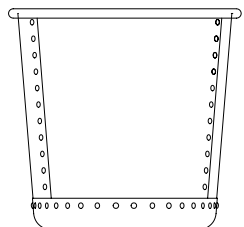
Diameter 67.4 cm [2' 2¾"]



### Large

Height 100 cm [3' 3½"]

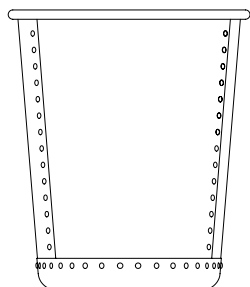
Diameter 71.3 cm [2' 4¼"]



### Small – Rolled Edge

Height 60 cm [1' 11½"]

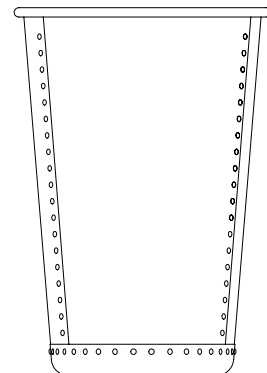
Diameter 63.2 cm [2' 1"]



### Medium – Rolled Edge

Height 76.2 cm [2' 6"]

Diameter 65.9 cm [2' 2"]



### Large – Rolled Edge

Height 100 cm [3' 2½"]

Diameter 69.8 cm [2' 3½"]

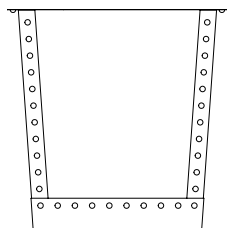




## The Square Terrace Copper Planters

Hand crafted from heavy gauge brass with flat top or rolled-edge option, riveted together and verdigris patinated.

Image shows size:  
Medium – Rolled Edge

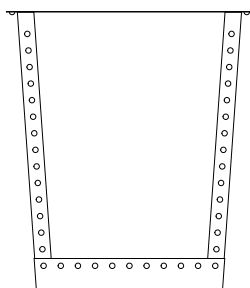


### Small

Height 60 cm [1' 11½"]

Width 60 cm [1' 11½"]

Depth 60 cm [1' 11½"]

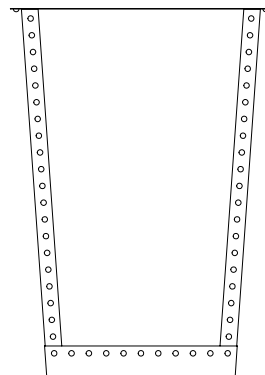


### Medium

Height 76.2 cm [2' 6"]

Width 67.4 cm [2' 2½"]

Depth 67.4 cm [2' 2½"]

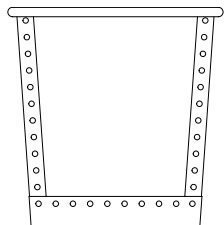


### Large

Height 100 cm [3' 3½"]

Width 70.8 cm [2' 4"]

Depth 70.8 cm [2' 4"]

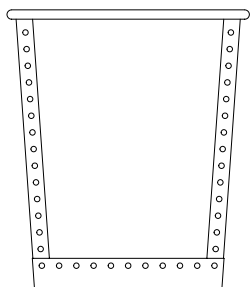


### Small – Rolled Edge

Height 60 cm [1' 11½"]

Width 58.7 cm [1' 11¼"]

Depth 58.7 cm [1' 11¼"]

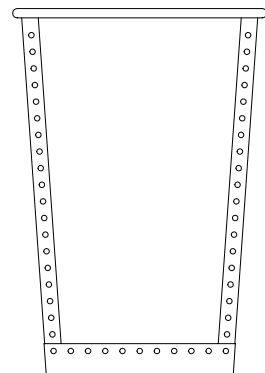


### Medium – Rolled Edge

Height 76.2 cm [2' 6"]

Width 66.1 cm [2' 2"]

Depth 66.1 cm [2' 2"]



### Large – Rolled Edge

Height 100 cm [3' 3½"]

Width 69.4 cm [2' 3½"]

Depth 69.4 cm [2' 3½"]

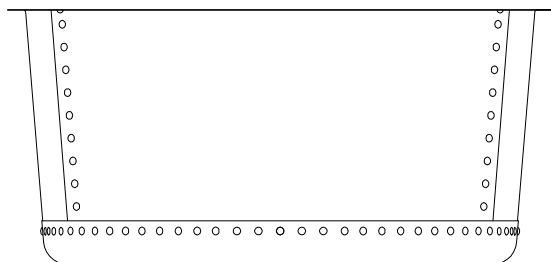




## The Courtyard Copper Planters

Hand crafted from heavy gauge brass, riveted together and then verdigris patinated to imitate the Victorian antique originals.

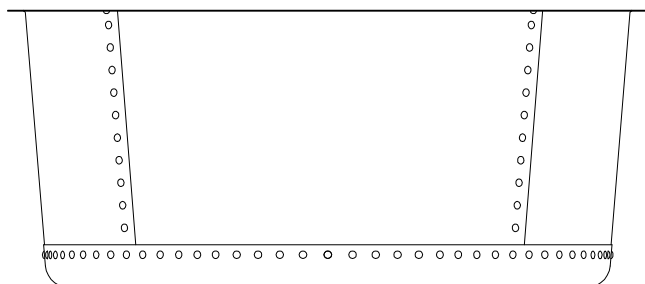
Image shows size: Large



### Small

Height 50 cm [1' 7¾"]

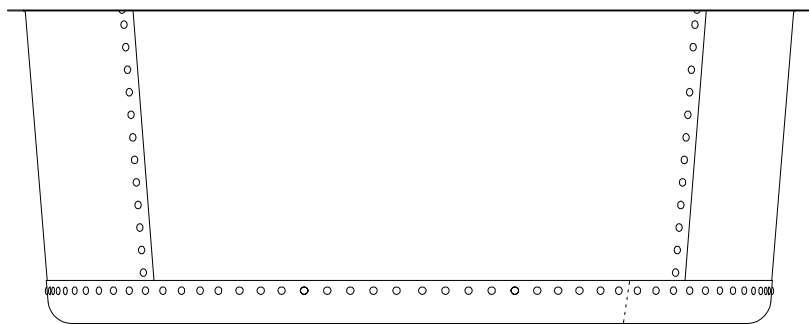
Diameter 107 cm [3' 6¼"]



### Medium

Height 55 cm [1' 9¾"]

Diameter 127 cm [4' 2"]



### Large

Height 62.2 cm [2' ½"]

Diameter 159.5 cm [5' 2¾"]

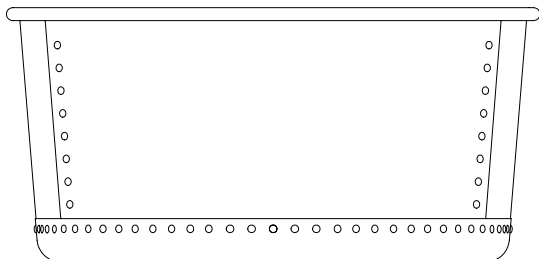




**The Courtyard  
Copper Planters**  
**Rolled Edge**

Hand crafted from heavy gauge brass with a rolled-edge top, riveted together and verdigris patinated.

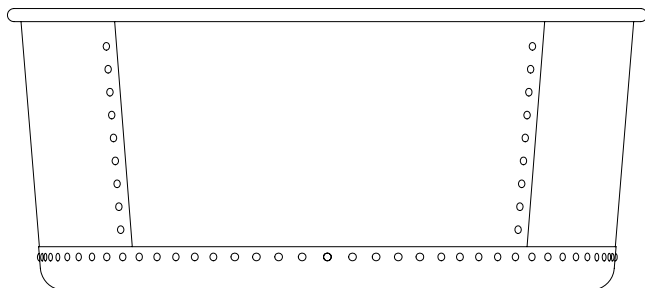
Image shows size: Small



**Small**

Height 50 cm [1' 7¾"]

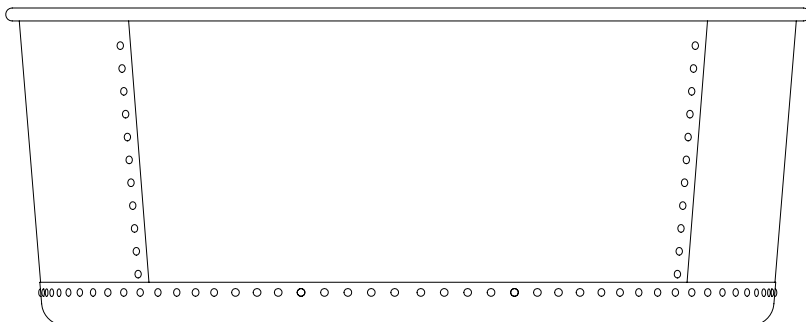
Diameter 104.9 cm [3' 5½"]



**Medium**

Height 55 cm [1' 9¾"]

Diameter 124.9 cm [4' 1¼"]



**Large**

Height 62.2 cm [2' ½"]

Diameter 157.4 cm [5' 2"]





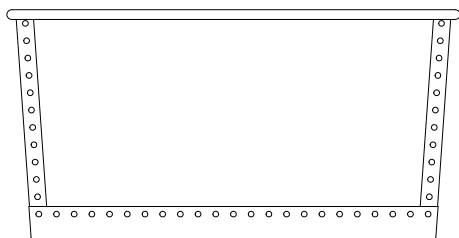
## The Rectangular Copper Planters

### Rolled Edge

Hand crafted from heavy gauge brass with a rolled-edge top, riveted together and verdigris patinated.

Available in two depths.

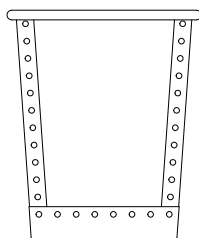
Image shows size: Large Wide



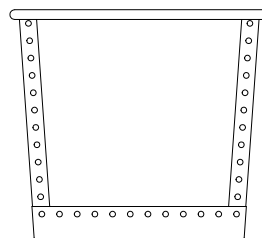
#### Small

Height 60 cm [1' 11½"]

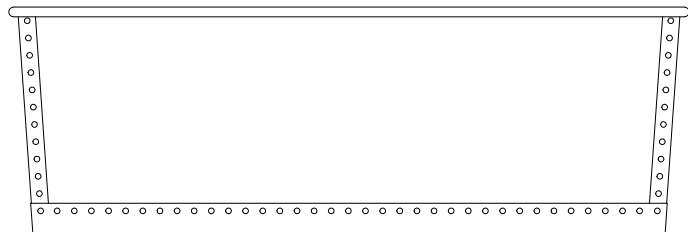
Length 118.7 cm [3' 10¾"]



**Narrow** 50.9 cm [1' 8"]



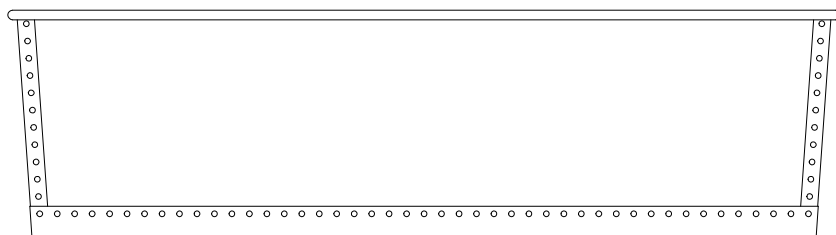
**Wide** 67.7 cm [2' 2½"]



#### Medium

Height 60 cm [1' 11½"]

Length 178.7 cm [5' 10¼"]



#### Large

Height 60 cm [1' 11½"]

Length 218.7 cm [7' 2"]



Image courtesy of Louise Ness



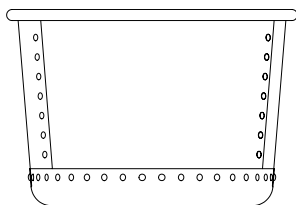
## The Circular Copper Water Containers

### Rolled Edge

Hand crafted from heavy gauge brass with a rolled-edge top, riveted together and verdigris patinated.

A pump pack is available.

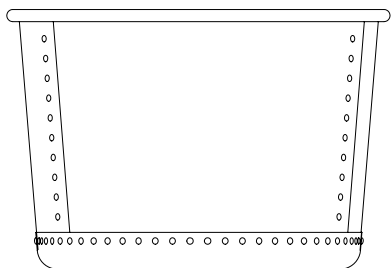
Image shows size: Large



### Medium

Height 45 cm [1' 5<sup>3</sup>/<sub>4</sub>"]

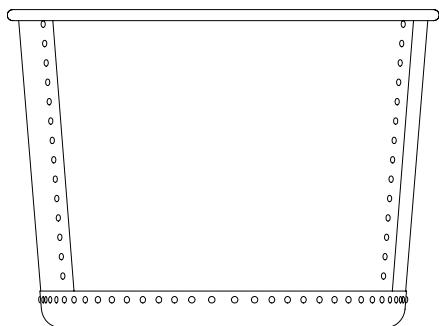
Width 66.7 cm [2' 2<sup>1</sup>/<sub>4</sub>"]



### Large

Height 60 cm [1' 11<sup>1</sup>/<sub>2</sub>"]

Width 88.6 cm [2' 11"]



### Very Large

Height 73.5 cm [2' 5"]

Width 99.7 cm [3' 3<sup>1</sup>/<sub>4</sub>"]





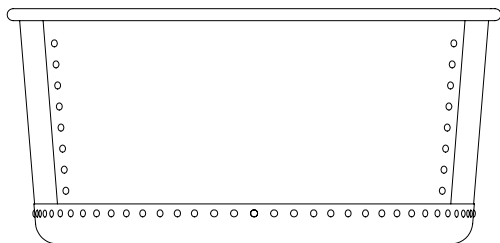
## The Courtyard Copper Water Containers

### Rolled Edge

Hand crafted from heavy gauge brass with a rolled-edge top, riveted together and verdigris patinated.

A pump pack is available.

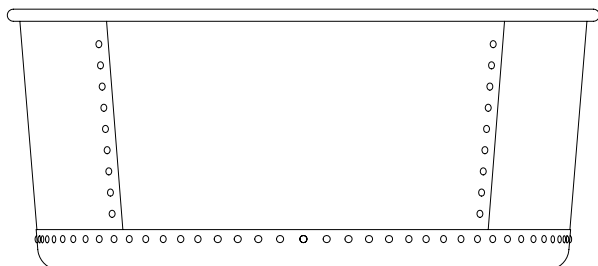
Image shows size: Large



#### Small

Height 50 cm [1' 7¾"]

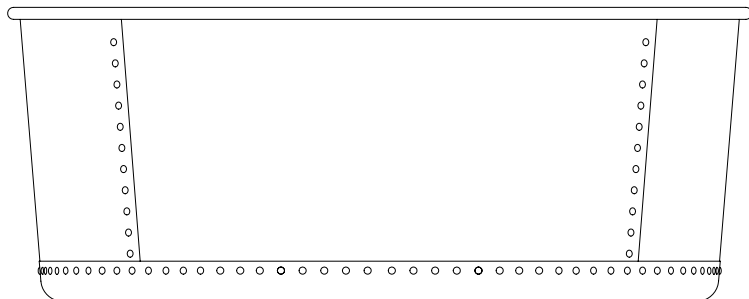
Diameter 104.9 cm [3' 5½"]



#### Medium

Height 55 cm [1' 9¾"]

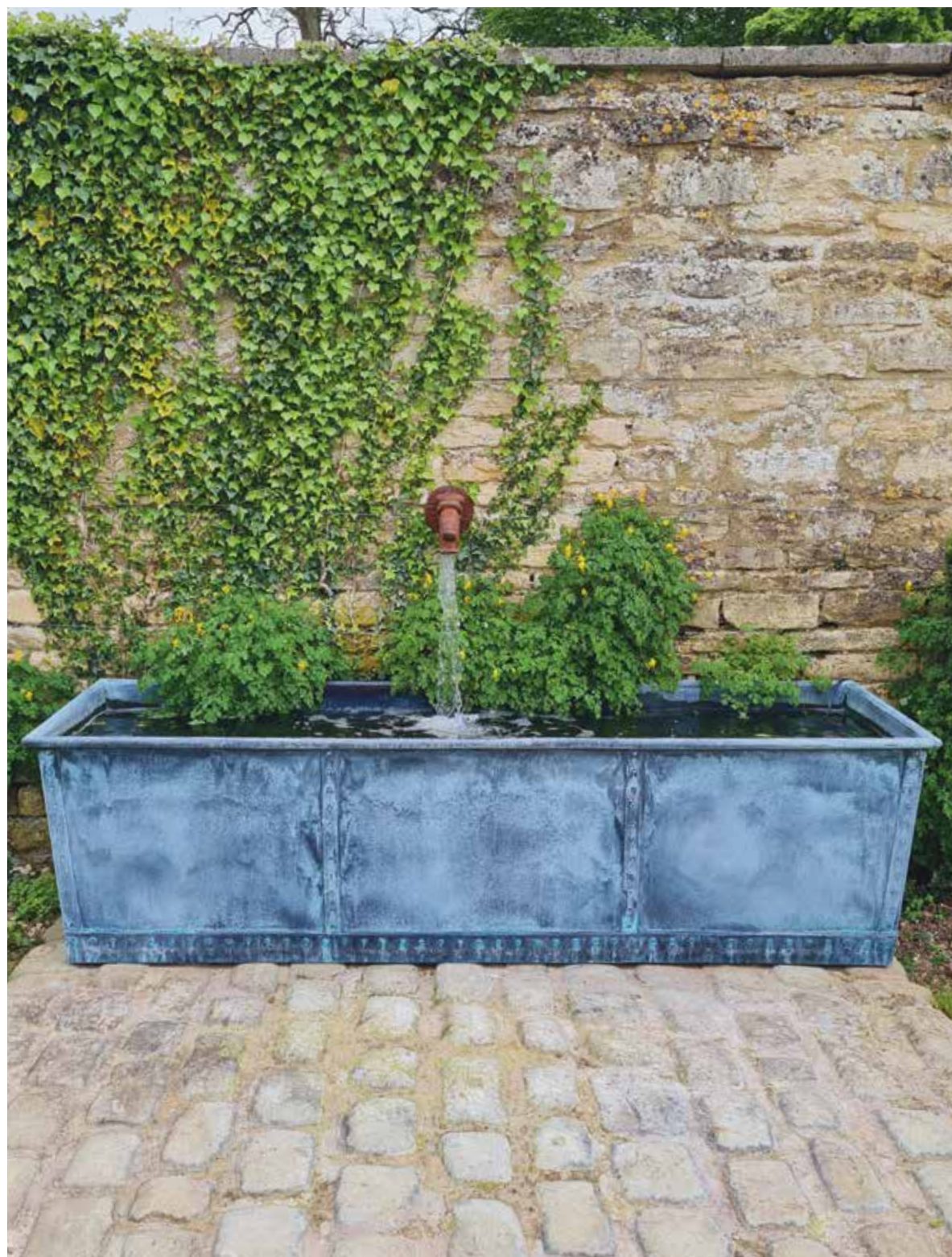
Diameter 124.9 cm [4' 1¼"]



#### Large

Height 62.2 cm [2' ½"]

Diameter 157.4 cm [5' 2"]



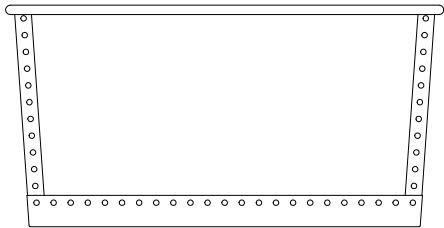


## The Rectangular Copper Water Containers

### Rolled Edge

Hand crafted from heavy gauge brass with a rolled-edge top, riveted together and verdigris patinated.

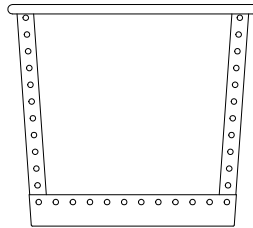
Image shows size: Large



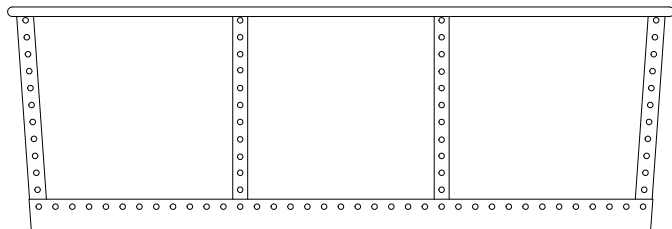
#### Small

Height 60 cm [1' 11½"]

Length 118.7 cm [3' 10¾"]



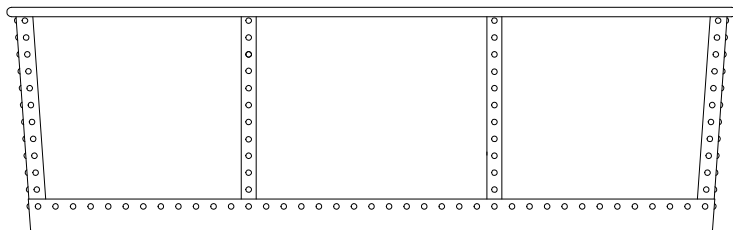
Depth 67.7 cm [2' 2½"]



#### Medium

Height 60 cm [1' 11½"]

Length 178.7 cm [5' 10¼"]



#### Large

Height 60 cm [1' 11½"]

Length 196 cm [6' 5¼"]



## National Trust

### The Sissinghurst Castle Garden Copper Planter

Sissinghurst Estate was a ruin when purchased by Vita Sackville-West and Harold Nicolson in 1930. After three years of clearing the long-overgrown land, the creation of 'a garden where none was' became a joint labour of love that would last for over three decades.

In general, Harold was responsible for the design and layout along strong architectural lines, while Vita (so named to differentiate her from her mother, also a Victoria) was the head of her team of gardeners, innovating with informal planting schemes to give visitors a



© The Cecil Beaton Studio Archive at Sotheby's



© National Trust Images/Andrew Butler



## ARCHITECTURAL HERITAGE

GARDEN | MODERN BRITISH | INTERIOR



© National Trust Image/Amiel de Serra

horticultural experience of discovery and exploration.

First opened to the public in 1937, the gardens 'drew on the sense of an abandoned past' with the old Tower at its ancient heart. Although the White Garden is the most well-known of Sissinghurst's ten garden rooms, the Cottage Garden by contrast has a sunset planting scheme of hot colours, warm reds and golds, which shout in a riot of colour in late summer and autumn. Here, in the centre of the garden nestled between four tall Irish yews, is an original Copper Copper. Probably found locally (maybe even in the Tower) this now planter is a remnant of some long-outdated Victorian water heating system, reused by Vita as an axis feature.

Invited by the National Trust, who now look after Sissinghurst Castle Garden for the nation, Architectural Heritage is proud to have faithfully copied the original planter down to the last rivet. Fashioned from the same grade of thick sheet brass, we have fabricated the distinctive bulbous shape and verdigris patinated *The Sissinghurst Castle Garden Copper Planter* to last another lifetime.

Poignantly, Vita wrote in 1959 'his scoop... it is still there – a little hollow in one of the stones near the central copper basin', Harold used it to measure how much rain had fallen in the night. Three years later Vita passed, however, the garden that 'tethered her floating heart' remains to this day for us all to enjoy.



© National Trust Image/David Sellman



Image courtesy of Mark Lutyens



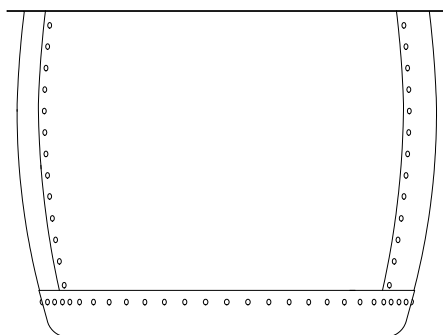
National  
Trust

**The Sissinghurst  
Castle Garden  
Copper Planters**

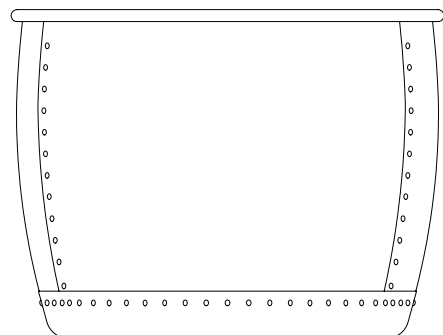
The Sissinghurst Castle Garden Copper Planter is now available with either a flat top or rolled edge. Hand crafted from heavy gauge brass with the distinctive bulbous shape, this planter is riveted together and then verdigris patinated to replicate the original.



© National Trust Images/Andrew Butler



Height 70 cm [2' 3½"]  
Diameter 94 cm [3' 1"]



Height 70 cm [2' 3½"]  
Diameter 92 cm [3' ¼"]





© National Trust Images/Andrew Butler







Marklordphotography.co.uk, design joannealderson.com, created by gardensignco.co.uk



Image courtesy of Clare Barnett-Naghshineh



Marklordphotography.co.uk, design joannealderson.com, created by gardensignco.co.uk



Photograph by Eleanor Walpole/Garden Design by Butter Wakefield



Photograph by Eleanor Walpole/Garden Design by Butter Wakefield



Marklordphotography.co.uk, design joannealderson.com, created by gardensignco.co.uk





Photograph by Eleanor Walpole/Garden Design by Butter Wakefield



Photograph by Eleanor Walpole/Garden Design by Butter Wakefield



Marklordphotography.co.uk, design joannealderson.com, created by gardendesignco.co.uk











**THE AGE-  
PATINATED  
ARTIFICIAL  
STONE GARDEN  
FOUNTAIN &  
ORNAMENT  
COLLECTION**



### The Two Tier Fountain

A two tier fountain in age-patinated artificial stone taken from an 18th century original, each bowl having egg and dart moulding to the rim, raised upon baluster pedestals with carved foliage. The upper bowl is surmounted by a pineapple finial. A pump pack is available.

Overall height  
262 cm [8' 7"]  
Overall diameter  
137 cm [4' 6"]  
Square at base  
67 cm [2' 2"]

### The Great Westwood Pool Surround

A large and impressive age-patinated artificial stone pool surround at 6 metres diameter.

External diameter  
600 cm [19' 8"]  
Height  
35 cm [1' 1¼"]





Installation and photograph by Catswold Estates and Gardens Ltd

### **The Two Tier Fountain**

A two tier fountain in age-patinated artificial stone taken from an 18th century original, each bowl having egg and dart moulding to the rim, raised upon baluster pedestals with carved foliage. The upper bowl is surmounted by a pineapple finial. A pump pack is available.

Overall height  
262 cm [8'7"]  
Overall diameter  
137 cm [4'6"]  
Square at base  
67 cm [2'2"]

### **The Decorative Circular Pool Surround**

An age-patinated artificial stone circular pool surround having egg and dart decoration.

External diameter  
426 cm [14']  
Internal diameter  
366 cm [12']  
Height  
22 cm [8½"]



### **The Large Single Tier Fountain**

A large single tier fountain in age-patinated artificial stone, the bowl having egg and dart moulding to the rim, raised upon a baluster pedestal carved with acanthus foliage, with circular foot and square base. Surmounted by a spout in the form of a pineapple. A pump pack is available.

Overall height  
152.5 cm [5']  
Overall diameter  
135 cm [4'5"]  
Square at base  
67 cm [2'2"]





A Suffolk landscape designed by Timothy Garden Design

### **The Large Low Single Tier Fountain**

A large, low, single tier fountain in age-patinated artificial stone, the bowl having egg and dart moulding to the rim, raised upon a circular foot and square base. Surmounted by a spout in the form of a pineapple. A pump pack is available.

Overall height  
84 cm [2' 9"]  
Overall diameter  
135 cm [4' 5"]  
Square at base  
67 cm [2' 2"]



### **The Single Tier Fountain**

A single tier fountain in age-patinated artificial stone, the bowl having egg and dart moulding to the rim raised upon a pedestal with acanthus foliage on square base. Surmounted by a spout in the form of a pineapple. Also available in a natural stone colour patination.  
A pump pack is available.

Overall height  
125 cm [4' 1"]  
Overall diameter  
80 cm [2' 7½"]  
Square at base  
45 cm [1' 6"]

### **The Circular Pool Surround**

An age-patinated artificial stone circular pool surround. Also available in a natural stone colour patination.

External diameter  
320 cm [10' 6"]  
Height  
28 cm [11"]





### **The Single Tier Fountain**

A single tier fountain in age-patinated artificial stone, the bowl having egg and dart moulding to the rim raised upon a pedestal with acanthus foliage on square base. Surmounted by a spout in the form of a pineapple. Also available in a natural stone colour patination.

A pump pack is available.

Overall height  
125 cm [4' 1"]  
Overall diameter  
80 cm [2' 7½"]  
Square at base  
45 cm [1' 6"]

### **The Square Pool Surround**

This age-patinated artificial stone pool surround has many possibilities; squares, rectangles and rills. Illustration shows standard size.

Overall width 262 cm [8' 7"]  
Height 28 cm [11"]



Marklarphotography.co.uk, design joannealderson.com, created by gordenesignco.co.uk

### **The Rectangular Pool Surround**

An artificial stone pool surround of rectangular form, finished in a natural stone colour patination.

Height 28 cm [11"]

Width 362 cm [11' 6½"]

Length 562 cm [18' 5"]





### **The Wall Fountain with Lion Mask**

A wall fountain in age-patinated artificial stone, having arched back plate inset with a lead lion mask spout, raised above a 'D' shaped bowl with stepped rectangular base. A pump pack is available.

Height 151 cm [5']

Width 80 cm [2' 7"]

Depth 51 cm [1' 8"]



### **The Finial Urn on Neo-Classical Plinth**

An elegant lidded finial urn in age-patinated artificial stone. The finial urn having a circular socle and square base, campana shaped body with lobed decoration to the bowl and medallions to the rim, surmounted by a fluted finial. Raised upon an age-patinated artificial stone Neo-Classical plinth, after the original by Austin & Seeley.

Overall height 175 cm [5'9"]

Square at base 48 cm [1'7"]

Plinth height 91 cm [2'11¼"]





### **The Finial Urn**

An elegant lidded finial urn in age-patinated artificial stone. Having a circular socle and square base, campana shaped body with lobed decoration to the bowl and medallions to the rim, surmounted by a fluted finial.

Height 84cm [2'9"]

Diameter 56cm [1'10"]





Image courtesy of Butter Wakefield Garden Design





**The William IV  
Sundial Pedestal  
with Greenwich  
Armillary Sphere**

An age-patinated artificial  
stone sundial pedestal,  
available with choice of  
armillary sphere.

Overall height  
191 cm [6' 3¼"]

Square at base  
68 cm [2' 2½"]

Sphere diameter  
70 cm [2' 3½"]

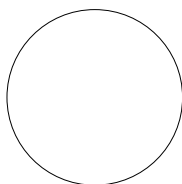




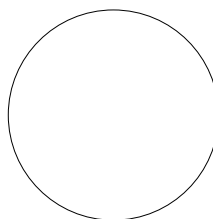


### The Sphere

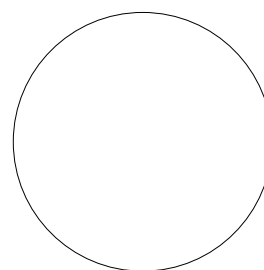
An age-patinated artificial stone sphere. Perfect for driveway edging or as finials.



**Small**  
Diameter 38 cm [1' 3"]



**Medium**  
Diameter 45.5 cm [1' 6"]



**Large**  
Diameter 56 cm [1' 10"]







**THE CARVED  
NATURAL  
STONE GARDEN  
ORNAMENT  
COLLECTION**







### **The Onslow Park Wall Fountain with Lead Spout**

A hand carved natural limestone wall fountain having a lead spout centred to the classical back plate. A bespoke fibreglass liner, tinted to match the stone, and pump pack, are available.

Height 156 cm [5' 1½"]

Width 140 cm [4' 7"]

Depth 86 cm [2' 10"]



### **The Baroque Seat**

A highly carved natural limestone garden seat, after the 18th century original, having paw foot end supports with arabesque and acanthus decoration. The centre panel with armorial plaque is flanked by blind strap work. The curved top rail has a central grotesque mask surrounded by profusely carved swags, grapes and flowers.

Overall height 127 cm [4' 2"]  
 Overall width 285 cm [9' 4"]  
 Seat depth 61 cm [2']





**The Curved  
Neo-Classical Seat**

A hand carved natural limestone park seat of curved form having panelled back with central roundel, scrolled arm supports and volute feet.

Height 100cm [3'3"]

Width 313cm [9'9"]

Depth 53cm [1'9"]



### **The Neo-Classical Seat**

A hand carved natural limestone seat having panelled back with central roundel, dentil moulded arm supports and feet with inswept plinth bases.

Height 102 cm [3' 4"]

Width 166.5 cm [5' 5½"]

Depth 51.5 cm [1' 8¼"]





### **The Campana Urn on Plinth**

A hand carved natural limestone campana shaped urn raised on a circular socle with square base, elevated on an optional square plinth with fielded panels.

Overall height 183 cm [6']

Urn height 98 cm [3' 2½"]

Urn diameter 70 cm [2' 3½"]

Plinth height 85 cm [2' 9½"]

Plinth width 60 cm [1' 11½"]

Plinth depth 60 cm [1' 11½"]



### **The Classic Straight Stone Bench**

A hand carved natural limestone bench having rectangular top on fluted shaped supports.

Height 48 cm [1' 7"]

Width 140 cm [4' 7"]

Depth 40 cm [1' 3¾"]





### **The Classic Curved Stone Bench**

A hand carved natural limestone bench having fluted supports and shaped seat.

Height 48 cm [1'7"]

Width 140 cm [4'7"]

Depth 40 cm [1'3¾"]

**The Obelisk**  
**Large**

A hand carved natural limestone obelisk of tapering square form raised upon a panelled square base supported by four spheres.

Height 249 cm [8'2"]

Width 46 cm [1'6"]

Depth 46 cm [1'6"]







### **The Obelisk**

A hand carved natural limestone obelisk of tapering square form raised upon a panelled square base supported by four spheres.

Height 186 cm [6' 1¼"]

Width 36 cm [1' 2"]

Depth 36 cm [1' 2"]

### **The Octagonal Vine Wellhead**

A hand carved natural limestone wellhead with stone step, wrought iron overthrow, pulley and chain.

Height 254cm [8' 4"]

Width 142cm [4' 8"]







### **The Column**

Bespoke commissions undertaken to supply hand carved natural limestone columns.









**THE LEAD  
GARDEN  
ORNAMENT  
& PLANTER  
COLLECTION**









**The Townhouse  
Lead Planter  
with Lion Masks**

After the antique original, a fine quality lead garden planter of circular form having applied lion mask below the rim.

**Small**

Height 51 cm [1'8"]

Diameter 61 cm [2']

**Medium**

Height 61 cm [2']

Diameter 76 cm [2'6"]







### **The Townhouse Lead Planters**

A lead planter of circular form with drainage holes to the base.

#### **Small**

Height 51 cm [1' 8"]  
Diameter 61 cm [2']

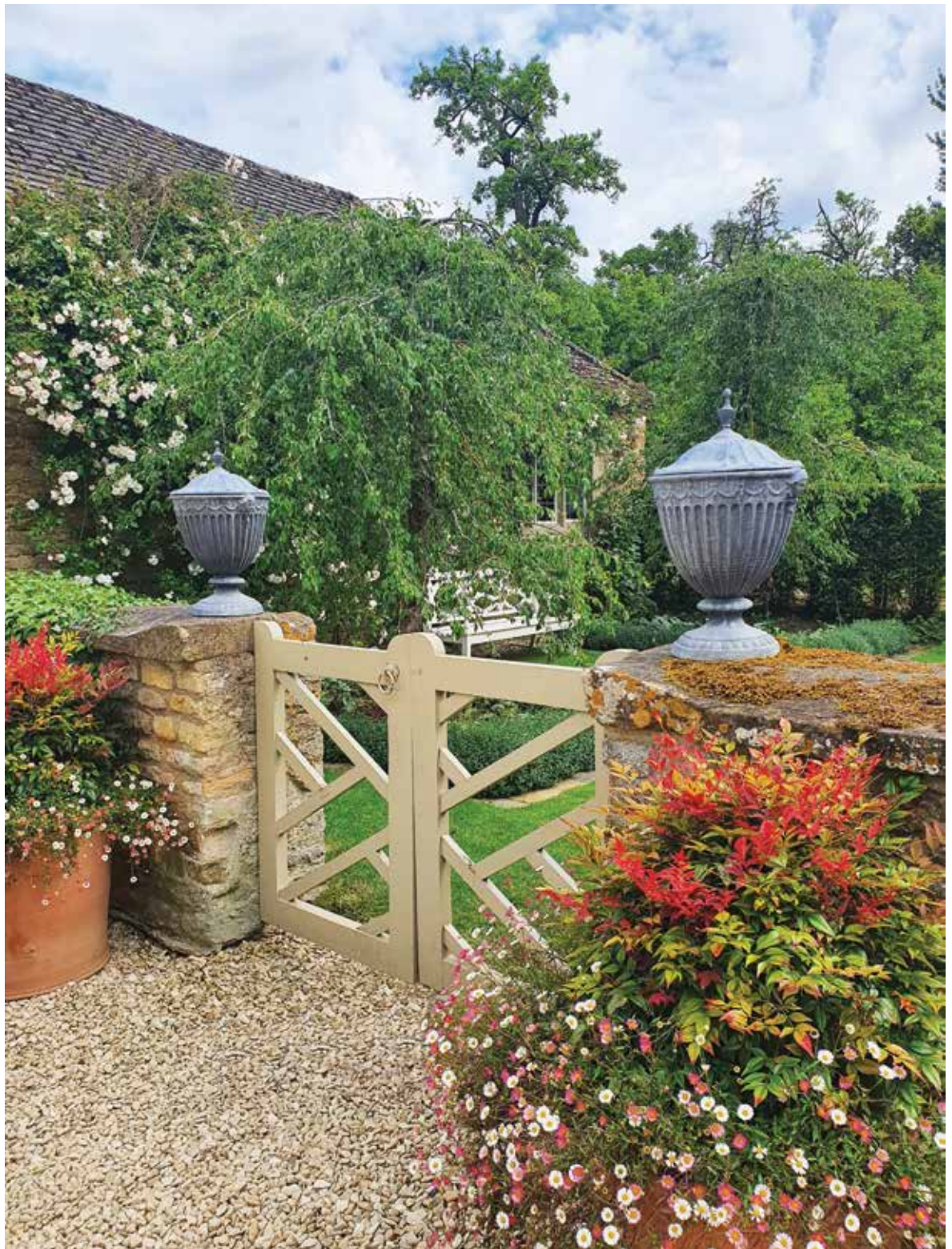
#### **Medium**

Height 61 cm [2']  
Diameter 76 cm [2' 6"]

#### **Large**

Height 75 cm [2' 6"]  
Diameter 91.5 cm [3']







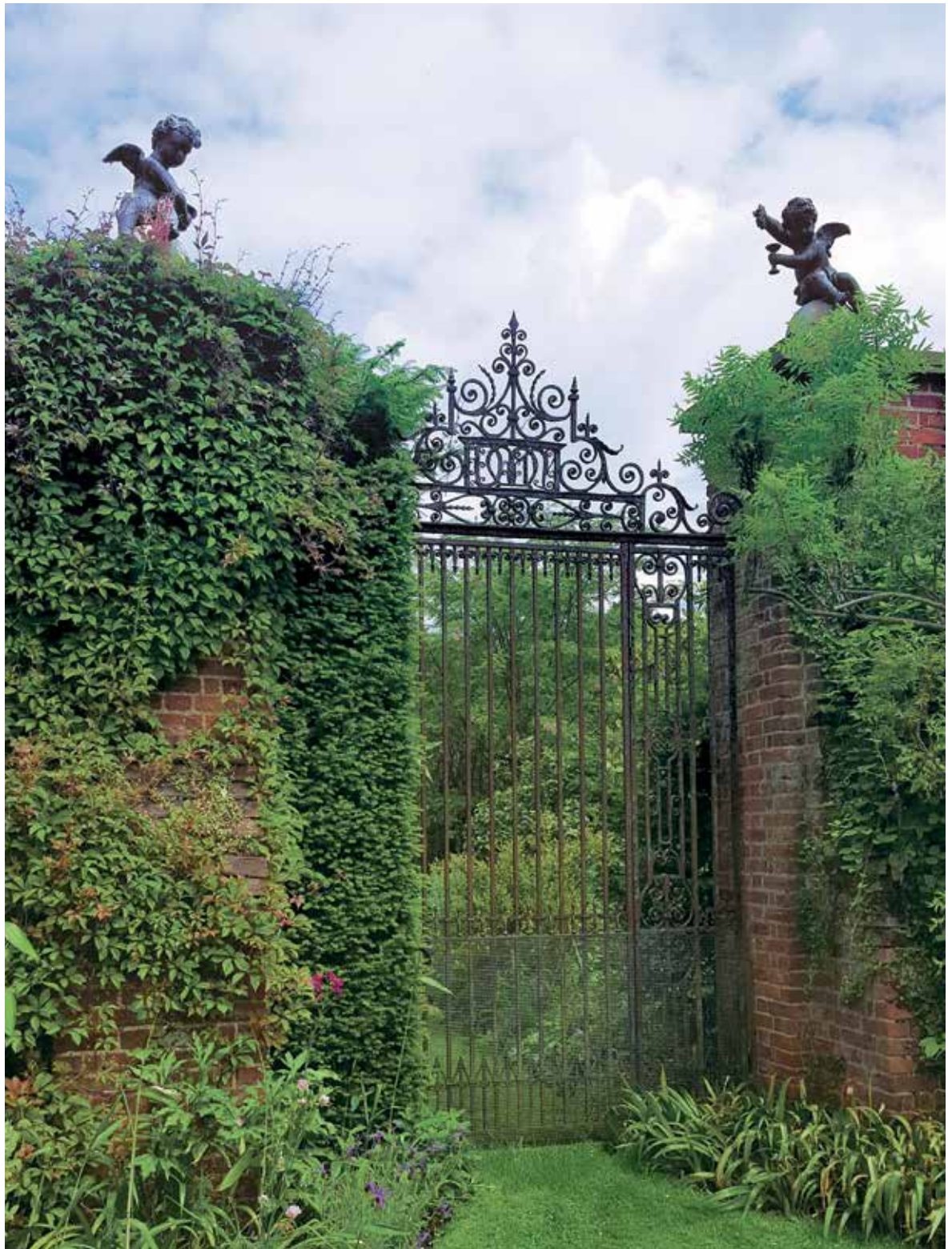


### **The Neo-Classical Lead Finial**

A lead finial urn in the Neo-Classic style having thumbnail groove decoration to the main body topped with swags and two masks, with a decorative lid and small finial, raised on a circular socle.

Height 60cm [1'11½"]

Diameter 40cm [1'3¾"]







**The Winged Lead  
Putti Finials**

A pair of winged lead Putti seated upon artificial stone spheres, after the 18th century originals.

Height 86 cm [2'10"]

Width 61 cm [2']



### **The Chiswick Lead Lion**

A faithful copy, in lead, of the original 18th century stone versions, probably carved by John Cheere (1709–1787) for Lord Burlington's Chiswick House. Of large proportions these lions, facing forward, recline in a relaxed pose, their front paws outstretched and hind quarters curled around, with the tail sweeping over hind leg. A small number of 18th century lead versions of these lions are extant, however, our models are the only lions available today that come close to replicating the grandeur and elegance of the large scale 18th century originals.

Height 75 cm [2' 5½"]

Width 166 cm [6' 5½"]

Depth 75 cm [2' 5½"]





### **The Chiswick Lead Lioness**

A faithful copy, in lead, of the original 18th century stone versions, probably carved by John Cheere (1709–1787) for Lord Burlington's Chiswick House. Of large proportions these lions, facing forward, recline in a relaxed pose, their front paws outstretched and hind quarters curled around, with the tail tucked under. A small number of 18th century lead versions of these lions are extant, however, our models are the only lions available today that come close to replicating the grandeur and elegance of the large scale 18th century originals.

Height 75 cm [2' 5½"]

Width 166 cm [6' 5½"]

Depth 75 cm [2' 5½"]









**THE CURATED  
GARDEN  
COLLECTION**



**The Farmhouse  
Garden Dining Table  
and Benches Set  
Large**

Joined using recycled teak, this large scale garden table and benches set will stay outside all year and gently weather in time to a silvery grey.

Seats 10

Table height 77 cm [2' 6¼"]

Table length 300 cm [9' 10"]

Table width 100 cm [3' 3½"]

Bench height 46.5 cm [1' 6¼"]

Bench length 300 cm [9' 10"]

Bench width 42 cm [1' 4½"]





**The Farmhouse  
Garden Dining Table  
and Benches Set**

Joined using recycled teak, this large scale garden table and benches set will stay outside all year and gently weather in time to a silvery grey.

Seats 8

Table height 77 cm [2' 6¼"]

Table length 250 cm [8' 2½"]

Table width 100 cm [3' 3½"]

Bench height 46.5 cm [1' 6¼"]

Bench length 250 cm [8' 2½"]

Bench width 42 cm [1' 4½"]









### **The Daini**

A bronze deer cast via the lost wax process, being a copy of the original found in the Villa dei Papiri, Herculaneum.

The Daini as a handed pair is also available.

Height 87 cm [2' 10¼"]

Width 74 cm [2' 5¼"]

Depth 22 cm [8¾"]

### **The Inverted Sundial Pedestal with Zenith Armillary Sphere**

A hand carved natural limestone sundial pedestal of tapering form, available with choice of armillary sphere.

Overall height  
178cm [5' 10"]

Square at base  
34cm [1' 1½"]

Sphere diameter  
47cm [1' 6½"]

### **The Zenith Armillary Sphere**

A verdigris bronze armillary sphere, pierced with an arrow and calibrated with the hours. Mounted upon a bell shaped support.

Overall height  
74cm [2' 5"]

Sphere diameter  
47cm [1' 6½"]

Diameter at base  
17cm [6½"]







### **The Inverted Sundial Pedestal with Greenwich Armillary Sphere**

A hand carved natural limestone sundial pedestal of tapering form, available with choice of armillary sphere.

Overall height  
198 cm [6' 6"]

Square at base  
34 cm [1' 1½"]

Sphere diameter  
70 cm [2' 3½"]

### **The Greenwich Armillary Sphere**

A verdigris bronze armillary sphere, pierced with an arrow and calibrated with the hours. Mounted upon a bell shaped support.

Overall height  
94 cm [3' 1"]

Sphere diameter  
70 cm [2' 3½"]

Diameter at base  
17 cm [6½"]









### The Ham House Coade Stone Pineapple Finial

A fine model based on the 18th century original made by Mrs Eleanor Coad, an example of which can be seen at Ham House, Twickenham. Here we have these handsome finials handcrafted in terracotta, being in the same material as developed by Coad in the 18th century – its twice fired mixture, including silica, makes this material impervious to the weather, hence we still have extant such fine examples of Mrs Coad's stone adorning the best houses and gardens in the country.

Height 86 cm [2' 10"]

Diameter 52 cm [1' 8½"]

Square at base 30 cm [11¾"]



**The Tree of Life**  
**Wall Panel – Circular**

The decorative panel, incorporating a tree with birds of paradise, is hand punched from recycled oil drums and finished with a varnish.

Diameter 86.5 cm [2' 10"]

*Please note that this item will  
rust in time when outside*





### **The Tree of Life Wall Panel**

The decorative panel, incorporating a tree with birds of paradise, is hand punched from recycled oil drums and finished with a varnish.

Diameter 86.5 cm [2' 10"]

*Please note that this item will  
rust in time when outside*







**PRICING &  
INFORMATION**

# ARCHITECTURAL HERITAGE

## — GARDEN ANTIQUES —



Specialising in Antique Garden Ornament, Statuary and Fountains for over 40 years, we carry an extensive inventory to supply clients with the finest examples of garden antiques on the market today.







Chelsea Flower Show



Galleries and Garden at Taddington

# ARCHITECTURAL HERITAGE

— MODERN BRITISH ART —



We have put the **ART** into **Architectural Heritage** with our offering of Modern British Art, primarily, but not exclusively, specialising in 20th century British sculpture. Fine examples of sculpture, paintings and works on paper, by established and interesting artists, are exhibited both here in our gallery at Taddington and at Fine Art Fairs in London.







Our Gallery



Art Fairs

# ARCHITECTURAL HERITAGE

## — ARCHITECTURAL INTERIORS —

In its earliest incarnation Architectural Heritage dealt primarily in antique architectural elements. Over the years we have grown and diversified, however, we have still retained our expertise in: antique panelling, chimneypieces, staircases, stained glass and unusual architectural elements.

To complement the antique architectural interiors, we also undertake commissions to carve, in natural limestone, bespoke stone chimneypieces.







# ARCHITECTURAL HERITAGE

— CONSULTANCY —

## Valuations

Whether you are looking to sell an item, seeking advice for insurance or probate purposes, or need an expert witness, we can assist.

Alex Puddy is an elected member of The British Antique Dealers' Association (BADA), The Association of Art & Antiques Dealers (LAPADA) and Chairman of The Cotswolds Art & Antique Dealers' Association (CADA), and with over 25 years' experience is well qualified to give a professional appraisal.

Please do contact us to discuss your requirements and we will in turn advise on our fee structure.

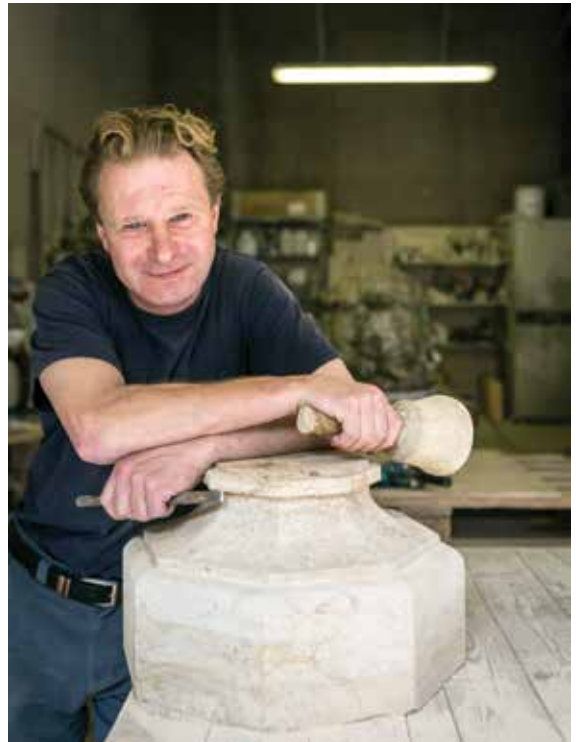






## Restoration

As specialists in our field we have, over the years, developed an unequalled understanding of the care required to conserve antique garden statuary and ornament. Adam Puddy, a qualified master stonemason, is an expert in the restoration of natural stone and composition stone. In addition, we can also advise on the conservation of garden statuary and ornament in other materials such as: marble, lead, bronze and terracotta. Please do contact us for advice and a quotation.



## PRICE LIST 2023

PAGE NO.	<b>THE FORGED IRON GARDEN DINING &amp; FURNITURE COLLECTON</b>	PRICE (EXCL. VAT)
4	The Circular Bistro Table with Two Low Ladderback Carver Garden Chairs	£ 2,140.00
5	The Circular Bistro Table with Two Ladderback Garden Chairs	£ 1,180.00
5	The Circular Bistro Table with Two Sprung Carver Garden Chairs	£ 1,180.00
5	The Circular Bistro Table with Two Sprung Garden Chairs	£ 1,140.00
6	The Medium Circular Garden Dining Table with Four Ladderback Carver Garden Chairs	£ 4,620.00
7	The Medium Circular Garden Dining Table with Four Ladderback Garden Chairs	£ 2,700.00
9	The Medium Circular Garden Dining Table with Semi-Circular Ladderback Garden Seat (High) and Three Ladderback Garden Chairs	£ 4,100.00
10	The Large Circular Garden Dining Table with Four Ladderback Carver Garden Chairs	£ 4,820.00
11	The Large Circular Garden Dining Table with Six Ladderback Garden Chairs	£ 3,700.00
12	The Square Garden Dining Table with Four Ladderback Garden Chairs	£ 2,700.00
13	The Square Garden Dining Table with Four Ladderback Carver Garden Chairs	£ 4,620.00
13	The Square Garden Dining Table with Four Sprung Garden Chairs	£ 2,620.00
13	The Square Garden Dining Table with Four Sprung Carver Garden Chairs	£ 2,700.00
15	The Medium Rectangular Garden Dining Table with Four Ladderback Garden Chairs and Two Ladderback Carver Garden Chairs	£ 4,960.00
16	The Large Rectangular Garden Dining Table with Eight Ladderback Garden Chairs and Two Ladderback Carver Garden Chairs	£ 6,760.00
17	The Very Large Rectangular Garden Dining Table with Ten Ladderback Garden Chairs and Two Ladderback Carver Garden Chairs	£ 7,760.00



PAGE NO.		PRICE (EXCL. VAT)
18	The Circular Garden Coffee Table with Two Low Ladderback Carver Garden Chairs	£ 2,100.00
19	The Circular Garden Coffee Table with Two Ladderback Garden Chairs	£ 1,140.00
19	The Circular Garden Coffee Table with Two Sprung Carver Garden Chairs	£ 1,140.00
19	The Circular Garden Coffee Table with Two Sprung Garden Chairs	£ 1,100.00
20	The Rectangular Garden Coffee Table with Two Low Ladderback Carver Garden Chairs and a Small Straight Ladderback Garden Seat	£ 3,740.00
21	The Rectangular Garden Coffee Table with Two Low Ladderback Carver Garden Chairs and a Medium Straight Ladderback Garden Seat	£ 3,940.00
22	The Small Straight Ladderback Garden Seat	£ 1,200.00
23	The Medium Straight Ladderback Garden Seat	£ 1,400.00
24	The Large Straight Ladderback Garden Seat	£ 1,600.00
25	The Semi-Circular Ladderback Garden Seat	£ 1,800.00
	The Semi-Circular Ladderback Garden Seat – High	£ 1,800.00
26	The Semi-Circular Ladderback Garden Tree Seat with Arms	£ 1,800.00
27	The Circular Ladderback Garden Tree Seat	£ 3,600.00
29	The Sprung Garden Chair	£ 380.00
29	The Sprung Carver Garden Chair	£ 400.00
30	The Ladderback Garden Chair	£ 400.00
30	The Ladderback Carver Garden Chair – High	£ 880.00
30	The Ladderback Carver Garden Chair – Low	£ 880.00
31	The Circular Bistro Table	£ 380.00
31	The Medium Circular Garden Dining Table	£ 1,100.00
31	The Large Circular Garden Dining Table	£ 1,300.00
32	The Square Garden Dining Table	£ 1,100.00
32	The Medium Rectangular Garden Dining Table	£ 1,600.00
33	The Large Rectangular Garden Dining Table	£ 1,800.00
33	The Very Large Rectangular Garden Dining Table	£ 2,000.00
34	The Circular Garden Coffee Table	£ 340.00
34	The Rectangular Garden Coffee Table	£ 780.00

*Nb. Our forged iron furniture is galvanised and then primed and painted in our standard white or, alternatively, for an additional 12.5% charge, to a paint colour of your choice.*

**The Circular Copper Planters**

39	The Circular Copper Planter – Small	£	1,100.00
39	The Circular Copper Planter – Medium	£	1,700.00
39	The Circular Copper Planter – Large	£	2,200.00
39	The Circular Copper Planter – Very Large	£	2,800.00
41	The Circular Copper Planter Rolled Edge – Small	£	1,200.00
41	The Circular Copper Planter Rolled Edge – Medium	£	1,800.00
41	The Circular Copper Planter Rolled Edge – Large	£	2,400.00
41	The Circular Copper Planter Rolled Edge – Very Large	£	3,000.00

**The Square Copper Planters**

43	The Square Copper Planter – Small	£	1,300.00
43	The Square Copper Planter – Medium	£	1,600.00
43	The Square Copper Planter – Large	£	2,400.00
43	The Square Copper Planter – Very Large	£	3,400.00
45	The Square Copper Planter Rolled Edge – Small	£	1,400.00
45	The Square Copper Planter Rolled Edge – Medium	£	1,800.00
45	The Square Copper Planter Rolled Edge – Large	£	2,800.00
45	The Square Copper Planter Rolled Edge – Very Large	£	3,800.00

**The Circular Terrace Copper Planters**

47	The Circular Terrace Copper Planter – Small	£	2,000.00
47	The Circular Terrace Copper Planter – Medium	£	2,200.00
47	The Circular Terrace Copper Planter – Large	£	2,600.00
47	The Circular Terrace Copper Planter Rolled Edge – Small	£	2,200.00
47	The Circular Terrace Copper Planter Rolled Edge – Medium	£	2,400.00
47	The Circular Terrace Copper Planter Rolled Edge – Large	£	2,800.00

**The Square Terrace Copper Planters**

49	The Square Terrace Copper Planter – Small	£	2,100.00
49	The Square Terrace Copper Planter – Medium	£	2,300.00
49	The Square Terrace Copper Planter – Large	£	2,800.00
49	The Square Terrace Copper Planter Rolled Edge – Small	£	2,300.00
49	The Square Terrace Copper Planter Rolled Edge – Medium	£	2,500.00
49	The Square Terrace Copper Planter Rolled Edge – Large	£	3,000.00

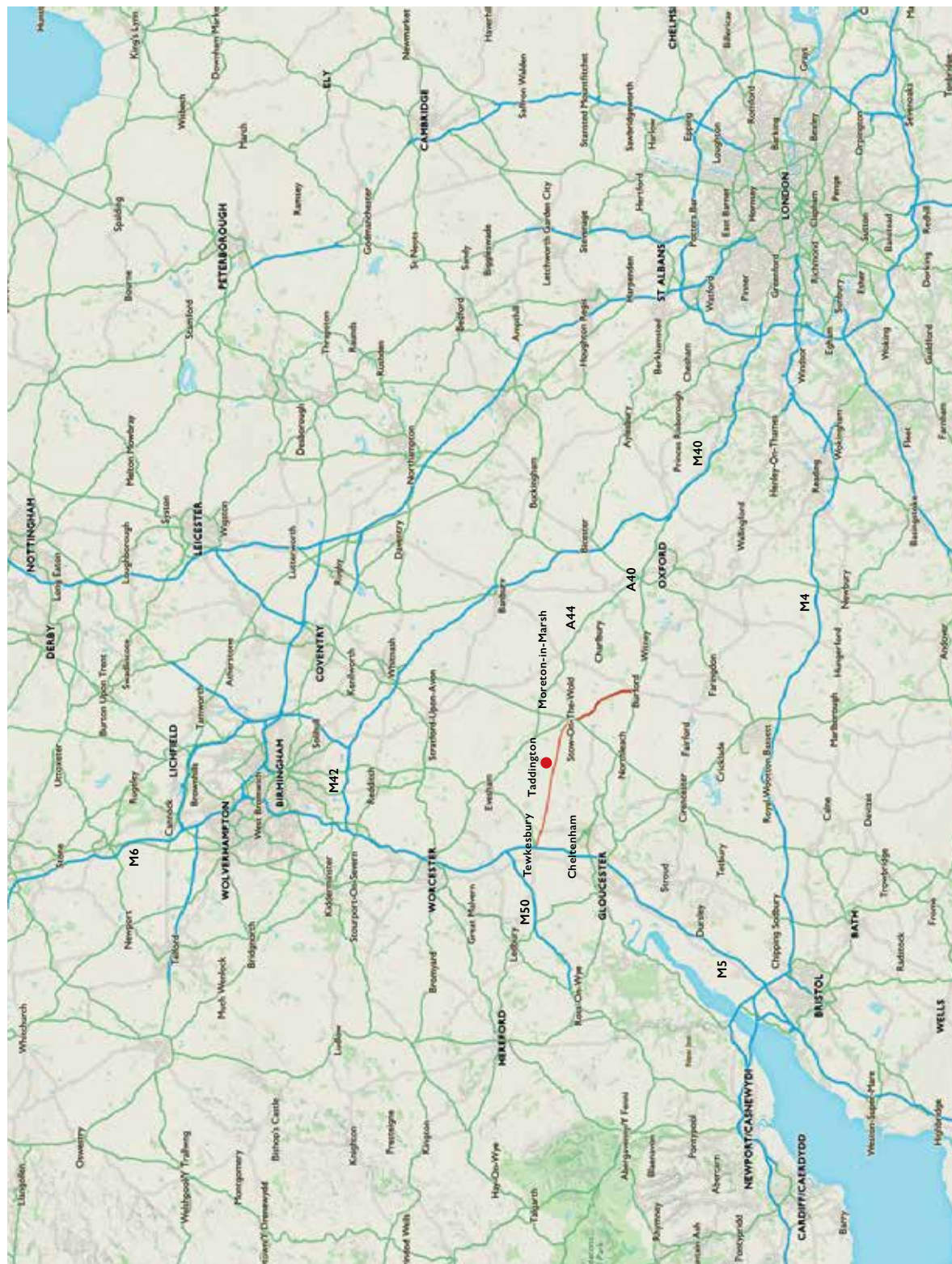


PAGE NO.	The Courtyard Copper Planters	PRICE (EXCL. VAT)
51	The Courtyard Copper Planter – Small	£ 2,800.00
51	The Courtyard Copper Planter – Medium	£ 3,800.00
51	The Courtyard Copper Planter – Large	£ 5,200.00
53	The Courtyard Copper Planter Rolled Edge – Small	£ 3,200.00
53	The Courtyard Copper Planter Rolled Edge – Medium	£ 4,200.00
53	The Courtyard Copper Planter Rolled Edge – Large	£ 5,600.00
<b>The Rectangular Copper Planters</b>		
55	The Rectangular Copper Planter Rolled Edge – Small – Narrow	£ 3,000.00
55	The Rectangular Copper Planter Rolled Edge – Small – Wide	£ 3,400.00
55	The Rectangular Copper Planter Rolled Edge – Medium – Narrow	£ 4,000.00
55	The Rectangular Copper Planter Rolled Edge – Medium – Wide	£ 4,400.00
55	The Rectangular Copper Planter Rolled Edge – Large – Narrow	£ 5,200.00
55	The Rectangular Copper Planter Rolled Edge – Large – Wide	£ 5,800.00
<b>The Circular Copper Water Containers</b>		
57	The Circular Copper Water Container Rolled Edge – Medium	£ 2,200.00
57	The Circular Copper Water Container Rolled Edge – Large	£ 3,000.00
57	The Circular Copper Water Container Rolled Edge – Very Large	£ 3,600.00
<b>The Courtyard Copper Water Containers</b>		
59	The Courtyard Copper Water Container Rolled Edge – Small	£ 3,400.00
59	The Courtyard Copper Water Container Rolled Edge – Medium	£ 4,600.00
59	The Courtyard Copper Water Container Rolled Edge – Large	£ 5,800.00
<b>The Rectangular Copper Water Containers</b>		
61	The Rectangular Copper Water Container Rolled Edge – Small	£ 4,400.00
61	The Rectangular Copper Water Container Rolled Edge – Medium	£ 5,400.00
61	The Rectangular Copper Water Container Rolled Edge – Large	£ 6,400.00
<b>The Sissinghurst Castle Garden Copper Planters</b>		
64	The Sissinghurst Castle Garden Copper Planter	£ 3,200.00
64	The Sissinghurst Castle Garden Copper Planter Rolled Edge	£ 3,600.00

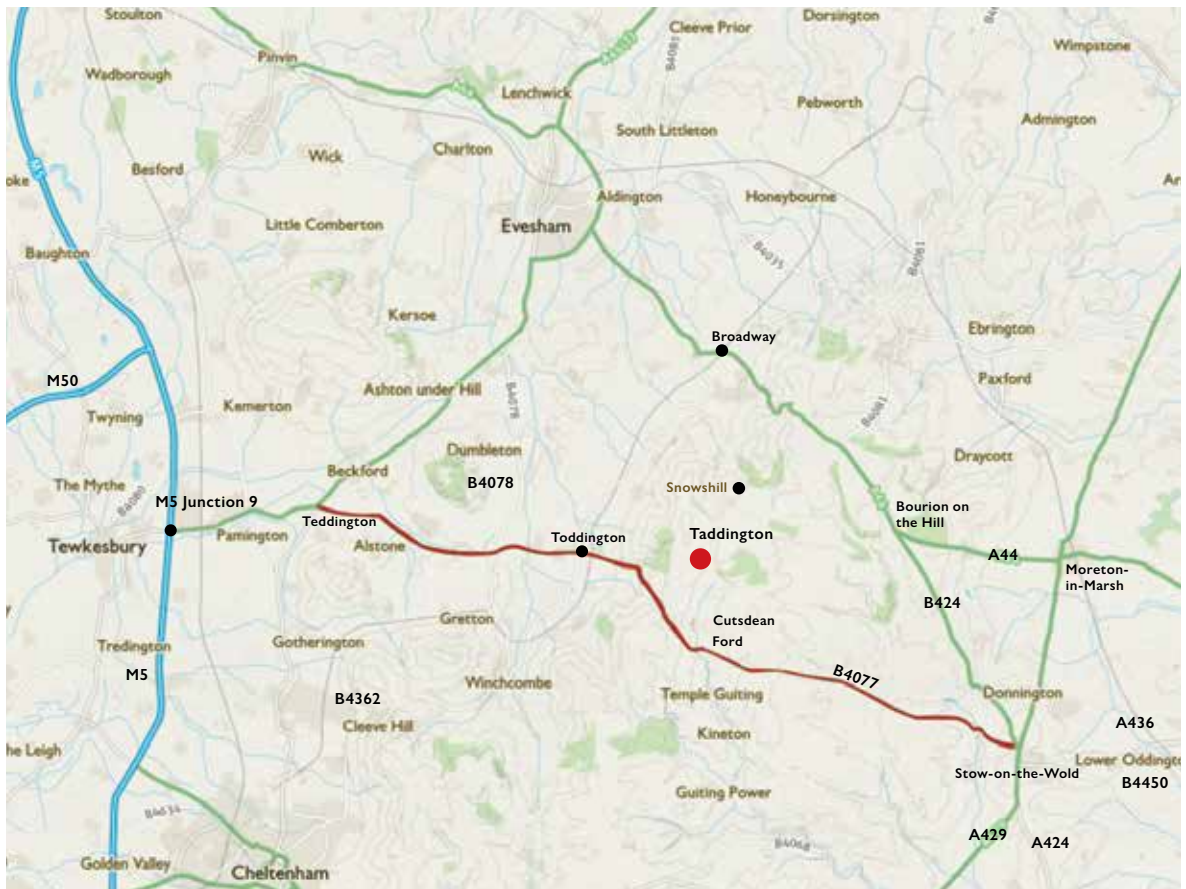
PAGE NO.	THE AGE-PATINATED ARTIFICIAL STONE GARDEN FOUNTAIN & ORNAMENT COLLECTION	PRICE (EXCL. VAT)
70	The Two Tier Fountain	£ 7,600.00
	The Two Tier Fountain Pump Pack	£ 400.00
70	The Great Westwood Pool Surround	£ 8,000.00
71	The Two Tier Fountain	£ 7,600.00
	The Two Tier Fountain Pump Pack	£ 400.00
71	The Decorative Circular Pool Surround	£ 5,000.00
72	The Large Single Tier Fountain	£ 4,600.00
	The Large Single Tier Fountain Pump Pack	£ 400.00
73	The Large Low Single Tier Fountain	£ 4,000.00
	The Large Low Single Tier Fountain Pump Pack	£ 400.00
74	The Single Tier Fountain	£ 3,400.00
	The Single Tier Fountain Pump Pack	£ 400.00
74	The Circular Pool Surround	£ 4,000.00
75	The Single Tier Fountain	£ 3,400.00
	The Single Tier Fountain Pump Pack	£ 400.00
75	The Square Pool Surround	£ 4,000.00
76	The Rectangular Pool Surround	£ 7,000.00
77	The Wall Fountain with Lion Mask	£ 3,600.00
	The Wall Fountain with Lion Mask Pump Pack	£ 400.00
78	The Finial Urn on Neo-Classical Plinth	£ 1,600.00
79	The Finial Urn	£ 1,200.00
81	The William IV Sundial Pedestal with Greenwich Armillary Sphere	£ 3,400.00
83	The Sphere – Small	£ 380.00
83	The Sphere – Medium	£ 560.00
83	The Sphere – Large	£ 740.00



PAGE NO.	THE CARVED NATURAL STONE GARDEN ORNAMENT COLLECTION	PRICE (EXCL. VAT)
87	The Onslow Park Wall Fountain with Lead Spout	£ 8,000.00
	The Onslow Park Wall Fountain Fibreglass Liner	£ 600.00
	The Onslow Park Wall Fountain Pump Pack	£ 400.00
88	The Baroque Seat	£ 8,600.00
89	The Curved Neo-Classical Seat	£ 7,400.00
90	The Neo-Classical Seat	£ 5,200.00
91	The Campana Urn on Plinth	£ 5,400.00
92	The Classic Straight Stone Bench	£ 1,400.00
93	The Classic Curved Stone Bench	£ 1,400.00
94	The Obelisk – Large	£ 3,600.00
95	The Obelisk	£ 2,600.00
96	The Octagonal Vine Wellhead	£ 6,400.00
97	The Column	£ 2,000.00
<b>THE LEAD GARDEN ORNAMENT &amp; PLANTER COLLECTION</b>		
101	The Townhouse Lead Planter with Lion Masks – Small	£ 2,600.00
101	The Townhouse Lead Planter with Lion Masks – Medium	£ 3,200.00
103	The Townhouse Lead Planter – Small	£ 2,400.00
103	The Townhouse Lead Planter – Medium	£ 3,000.00
103	The Townhouse Lead Planter – Large	£ 3,600.00
105	The Neo-Classical Lead Finial	£ 900.00
107	The Winged Lead Putti Finials	£ 4,600.00
108	The Chiswick Lead Lion	£ 24,000.00
109	The Chiswick Lead Lioness	£ 24,000.00
<b>THE CURATED GARDEN COLLECTION</b>		
112	The Farmhouse Garden Dining Table and Benches Set – Large	£ 5,600.00
113	The Farmhouse Garden Dining Table and Benches Set	£ 4,400.00
115	The Daini	£ 6,800.00
116	The Inverted Sundial Pedestal with Zenith Armillary Sphere	£ 2,400.00
116	The Zenith Armillary Sphere	£ 1,400.00
117	The Inverted Sundial Pedestal with Greenwich Armillary Sphere	£ 2,600.00
117	The Greenwich Armillary Sphere	£ 1,600.00
119	The Ham House Coade Stone Pineapple Finial	£ 6,000.00
120	The Tree of Life Wall Panel – Circular	£ 320.00
121	The Tree of Life Wall Panel	£ 320.00







## Location

Taddington Manor  
Taddington  
Nr. Cutsdean  
Gloucestershire  
England GL54 5RY

Architectural Heritage is situated in the grounds of Taddington Manor, in the tiny hamlet of Taddington. The galleries and garden are open year round.

We are one hour away from Oxford, Bristol and Birmingham, and two hours from London.



The British Antique Dealers' Association



LAPADA

The Association of Art & Antiques Dealers



The Cotswold Art & Antiques Dealers' Association



The Architectural Dealers' Association



Anti Copying in Design



Forest Carbon Club



# ARCHITECTURAL HERITAGE

GARDEN | MODERN BRITISH | INTERIOR

Taddington Manor  
Taddington, Nr. Cutsdean  
Gloucestershire  
England GL54 5RY  
office@architectural-heritage.co.uk  
www.architectural-heritage.co.uk  
Tel: +44 [0] 1386 584414

9.00am – 5.00pm Monday – Friday  
Saturdays by Appointment  
Closed Sundays and Bank Holidays



Follow us on Instagram



@ahgardencollections



@ahgardenantiques



@ahmodernbritishart

Designed & typeset by etal design consultants.

Printed in Great Britain by Stephens & George Ltd, on Edixion

Offset. Edixion is produced from sustainable sources and is fully recyclable.

Copyright © Architectural Heritage 2023. All rights reserved. No part of this publication may be reproduced, transmitted, or stored in a retrieval system, in any form, or by any means, without permission in writing from Architectural Heritage.



If undelivered please return to: Architectural Heritage, Taddington Manor, Taddington, Cheltenham, Gloucestershire, GL54 5RY, UK  
If your details have changed or you no longer wish to receive catalogues please email: [office@architectural-heritage.co.uk](mailto:office@architectural-heritage.co.uk)

